



EMFLEX[®]

Slide Guide & Rubber Lined Clip Set

N. Minikin & Sons Limited

Spa House, Hookstone Park, Harrogate, North Yorkshire, HG2 7DB

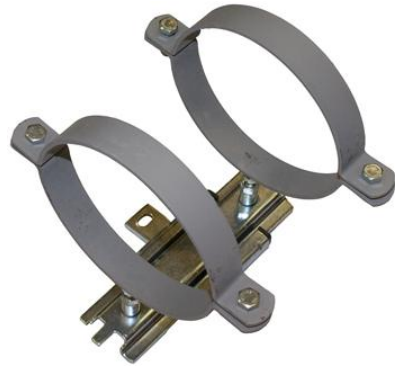
Email: enquiries@minikins.co.uk Web: www.minikins.co.uk

Tel: 01423 889845 Fax: 01423 880724



Slide Guide & Rubber Lined Clip Set

EMFLEX slide guide and clip sets are essential for the correct operation of AXIAL type expansion joints. A pipeline which contains an expansion joint and is anchored at each end can be considered as a load bearing column. Thus when pressure is applied, guides are necessary to prevent bowing and bending.



TYPE SSM

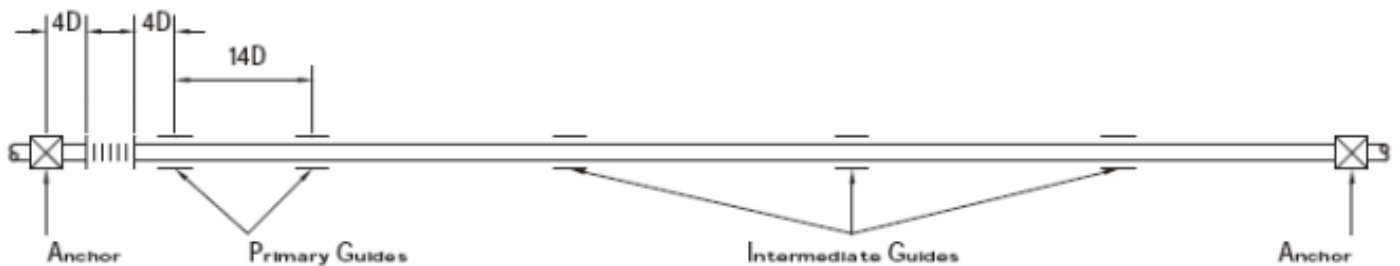
For use on steel pipelines for LPHW (low pressure hot water). Consists of a plated formed steel sliding component and slide rest, incorporating a threaded plated steel fixing (M12 or M16) complete with a rubber lined pipe clip.

TYPE SSMN

For use on copper pipelines domestic and hot water services. Consists of a plated formed steel sliding component and slide rest, incorporating a threaded plated steel fixing (M12 or M16) complete with a rubber lined pipe clip.

Axial expansion joints are designed to absorb movements generally between 25mm and 50mm, although longer movements of 75mm are available on request. They are fitted in the pipeline, in line with the movement. They require an anchor each end of the system to resist the pressure force and to compress the bellows. The following diagrams show two types of typical installations.

Typical Installation 1



Typical Installation 2

